

Long o Sound

REMEMBER: The **silent e** is like magic.
It can turn a short vowel word into a long vowel word.
When a word has more than one vowel, the word usually has a long vowel sound.

Long o with silent e.

We can change the word **not**
into the word **note**
by adding an e at the end of the word.

What new word will we have if we add e to the end
of the word **cod**?

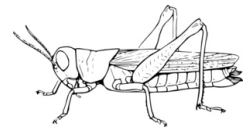


Make long vowel words by adding the letter e to the end of these
short vowel words.

rod _____



hop _____



rob _____



not _____



cop _____



tot _____



Long o spelled oa

When a word has more than one vowel, the word usually has a long vowel sound.



Long o with the letter a.

In the word boat, the letter o gives its long sound. The letter a is silent.

When we mark the vowels.

Strike out the silent letters.

Add a line over the top of the letter that shows the long vowel sound.

Mark the vowels in the following words.

g^oat

coat

coal

road

load

goal

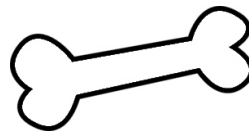
soap

boat

Read the sentences.

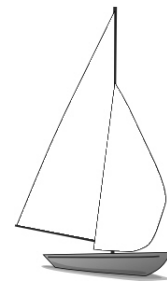
Tom wanted to go home.

The dog had a bone.



Mom put soap on the mop.

Rob got a new boat.



The goat ate my new coat.



Long o

If the word has two vowels, it usually has a long vowel sound.



Circle the **short** O words.

rod

rope

pond

mop

hope

goat

mode

hog

top

poke

sod

goal

Read the following words and mark the vowels.

bōne

hōt

tone

boat

rod

rode

cod

code

not

note

vote

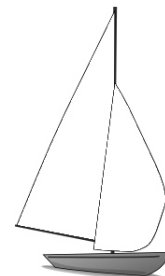
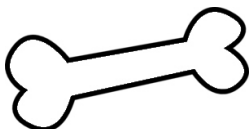
road

goat

hop

hope

cope



Special Long o Sound

Sometimes when the letter l follows the letter o, the o gives its long sound.

Circle the letters ol in the words below and read the words.

Examples:

old colt cold bolt mold
sold molt told fold gold

The man was very _____ and
walked with a cane.



I _____ my bike for \$10.00.

Mom's ring is made of _____.

Up and down, Hot and _____.

Dad says, "Do as you are _____."

A _____ is a horse.

I will _____ my quilt.



Place the words in the correctly shaped boxes.

boat home coat old bolt

note goat pole oat cold

